

SOUTH SUGARLOAF FIRE



FIRE DETAILS

Fire Size:

- Approximately 232,906 acres
 - Bureau of Indian Affairs 4,199 ac
 - Bureau of Land Management 6,166 ac
 - U.S. Forest Service 139,610 ac
 - Private 82,910 ac

Containment:

- 93%

FUELS:

- Grass, Brush, and Juniper

Resources:

- Total Personnel: 734

Started:

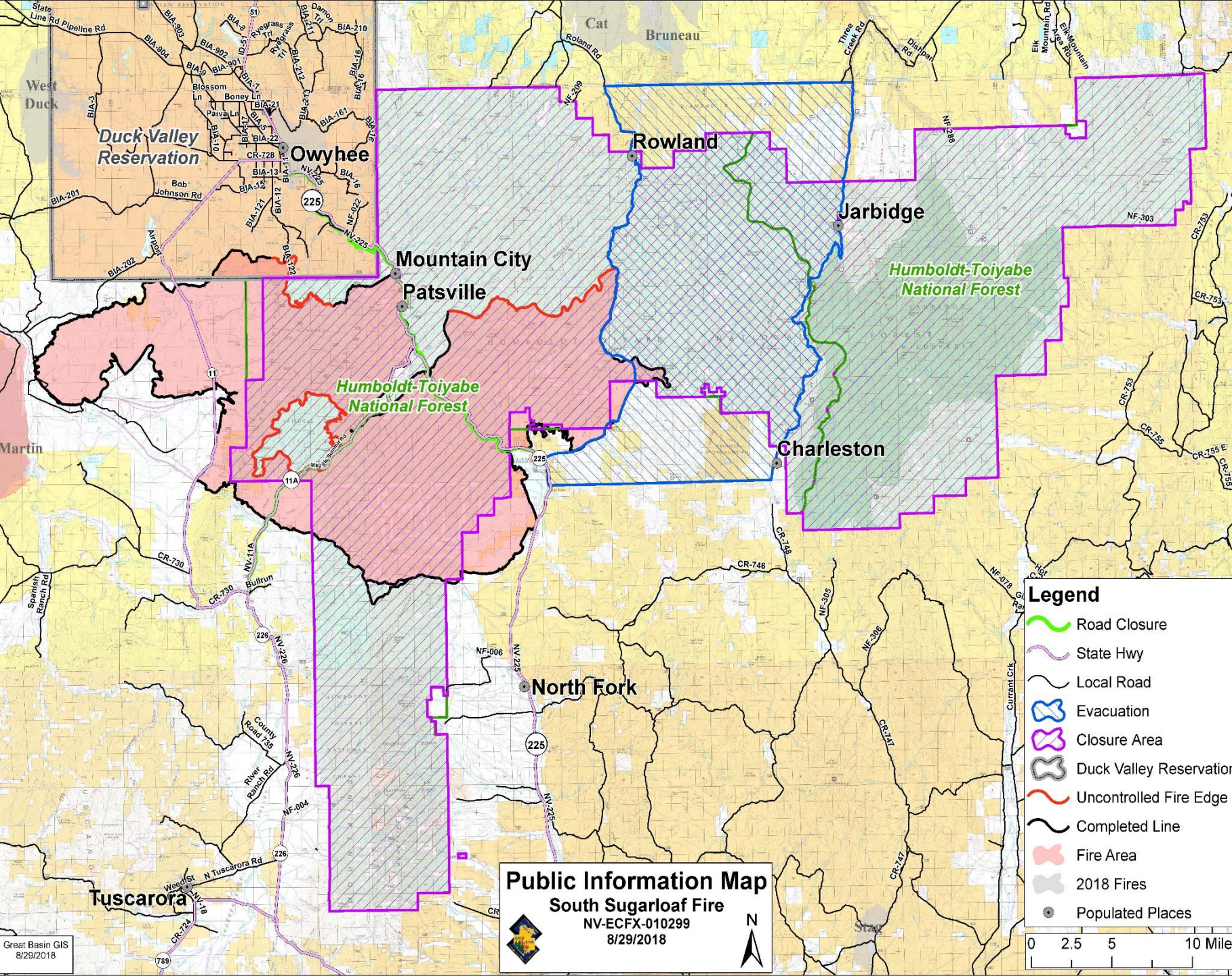
- August 17, 2018

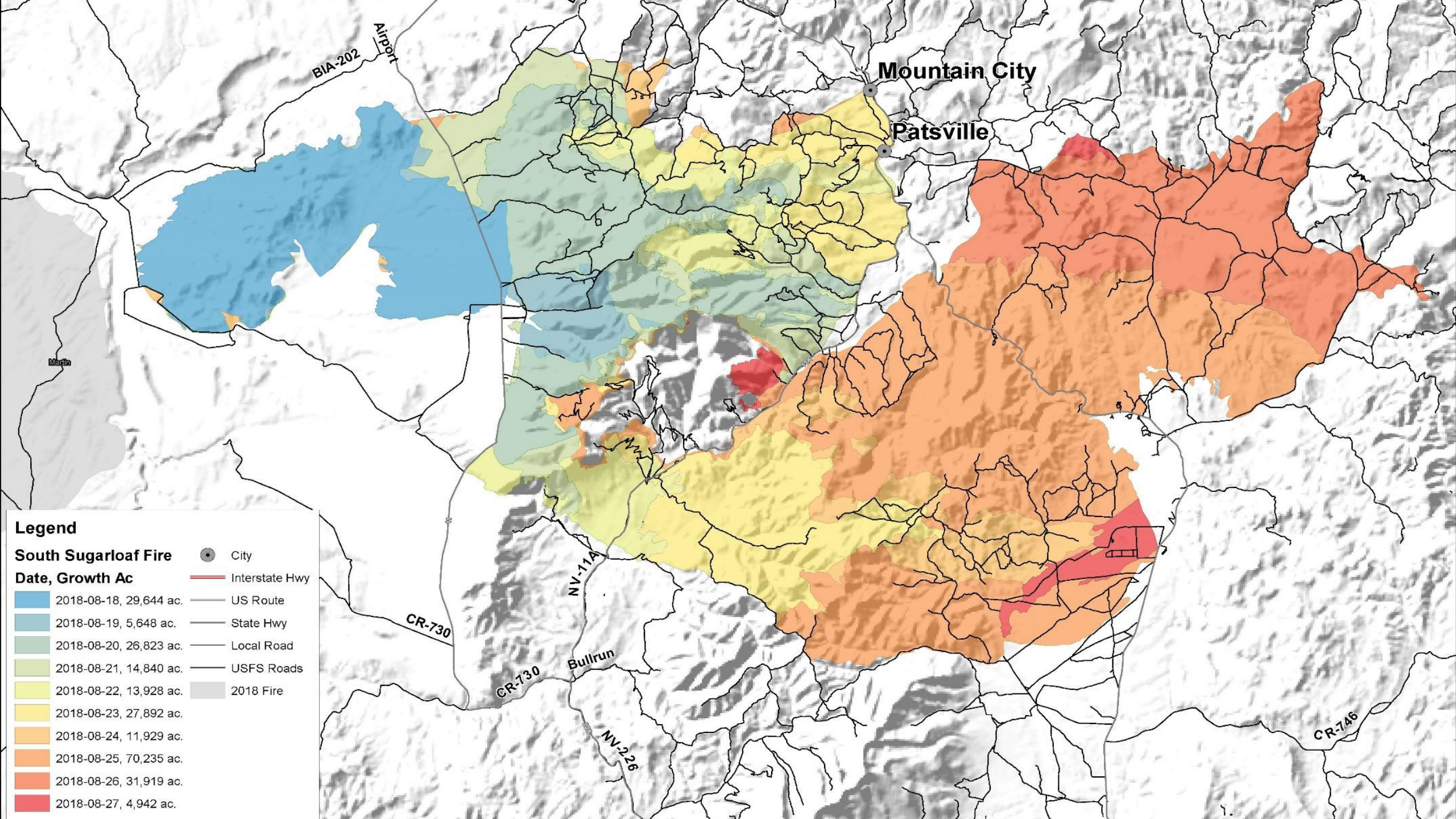
Cause:

- Lightning

Management:

- Lund Great Basin Type 1 Team





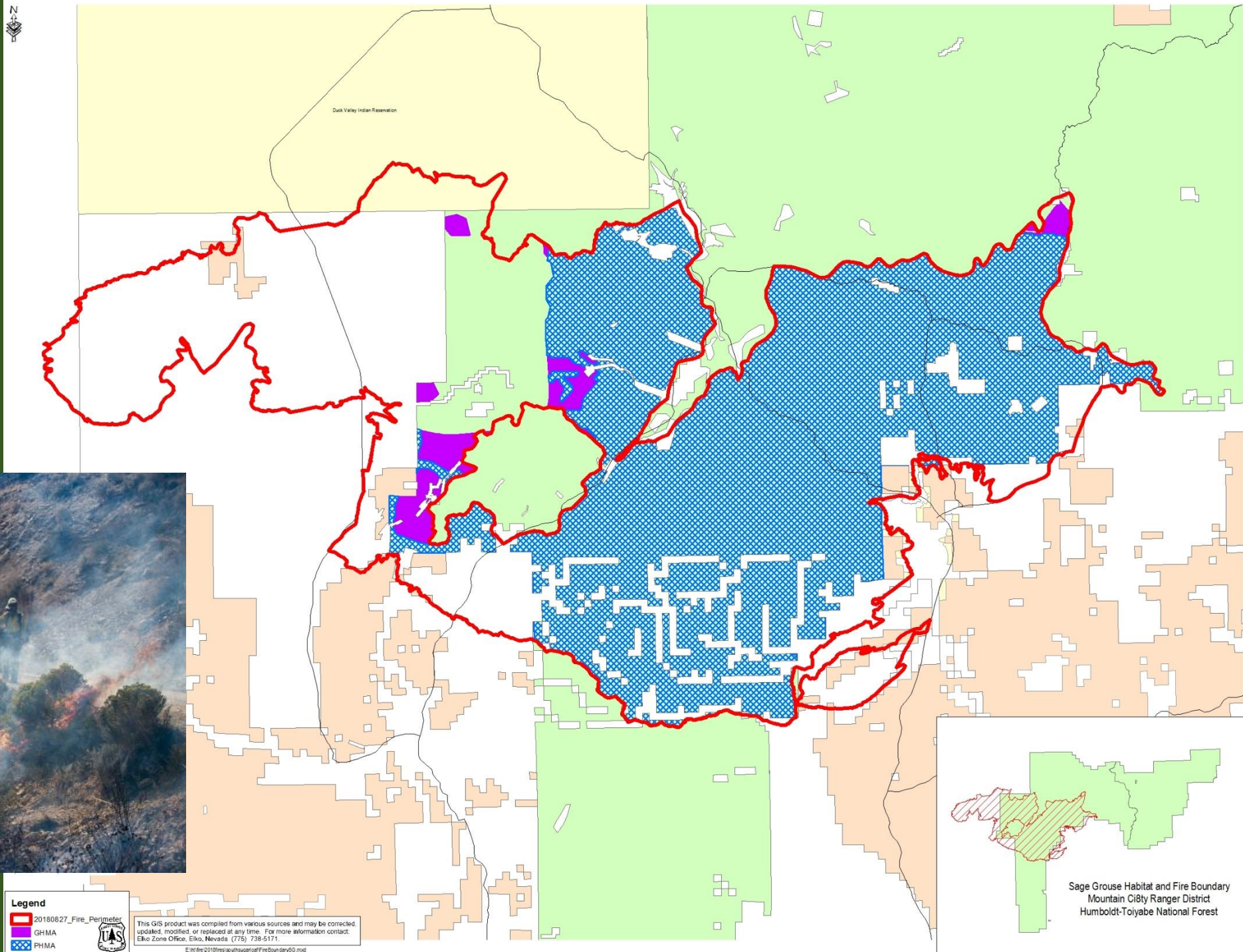
GREATER SAGE-GROUSE HABITAT EFFECTED

General Habitat Management Areas (GHMA):

- Approximately 7,089 acres

Priority Habitat Management Areas (PHMA):

- Approximately 136,892 acres




Legend

- 20180827_Fire_Perimeter
- GHMA
- PHMA

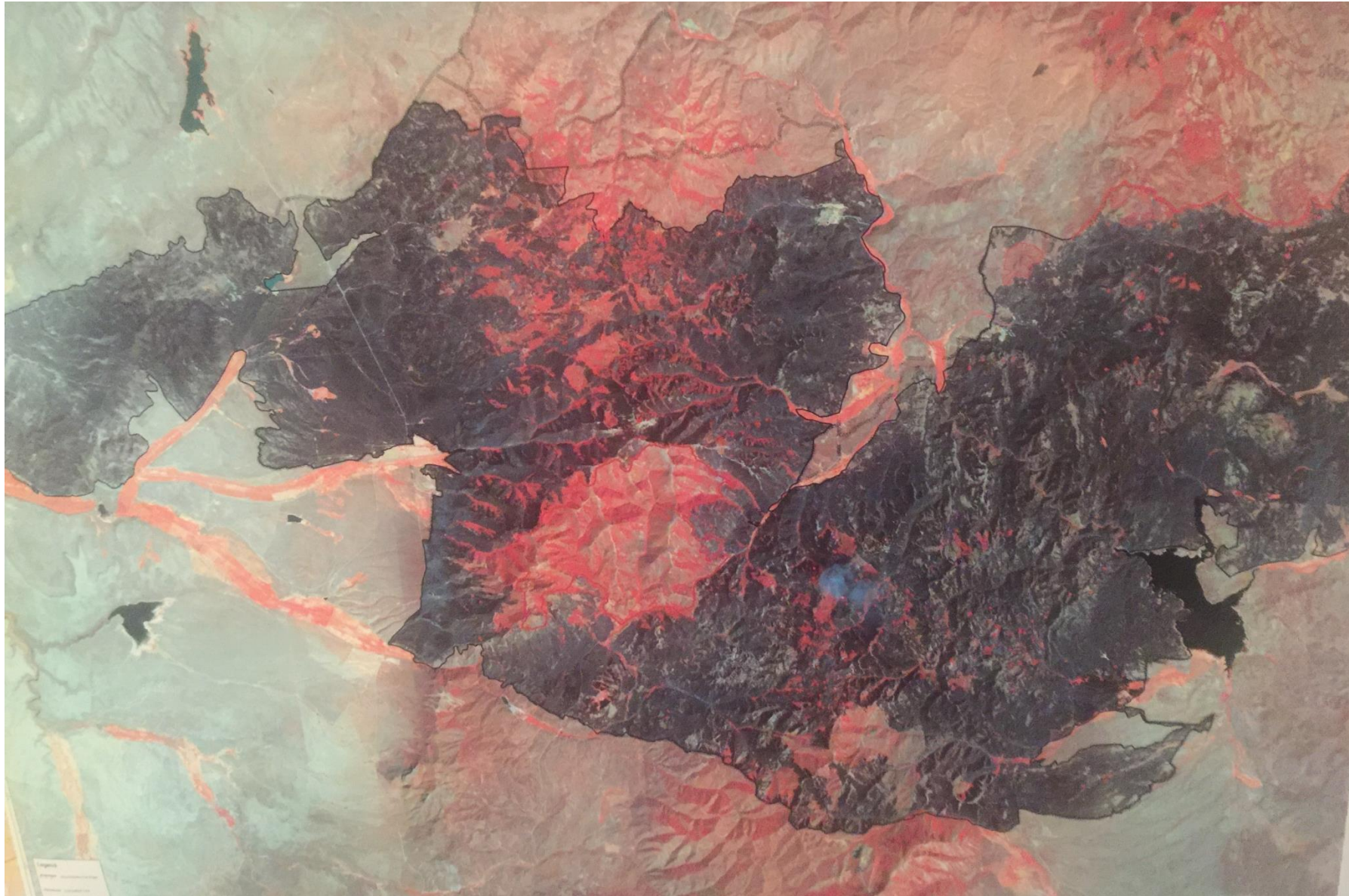


This GIS product was compiled from various sources and may be corrected, updated, modified, or replaced at any time. For more information contact: Elko Zone Office, Elko, Nevada, (775) 738-6171.

© In the 2018 fire season, the fire boundary was updated. 8/26/18



Sage Grouse Habitat and Fire Boundary
Mountain City Ranger District
Humboldt-Toiyabe National Forest



**Satellite
Imagery of
South
Sugarloaf Fire
Taken
Aug. 29, 2018**

**Red Represents
Unburned Area Within
Fire Perimeter**

AFTER THE FIRE

Burned Area Emergency Response (BAER)

- Life
- Property
- Federally Listed Species
- Heritage Resources
- Native Plant Communities

Long-Term Restoration

- Appropriated Funds
- Partnerships (Nevada Department of Wildlife (NDOW), Natural Resources Conservation Service (NRCS), etc.)
- Working with Permittees and Landowners
 - Alternative Allotments
 - Flexibility (Targeted Grazing)
 - Assistance from NRCS

